



March 2014 Monthly Update

North Dakota Pipeline Authority

Justin J. Kringstad

March 13, 2014 - Bismarck, ND

US Williston Basin Oil Production - 2013

MONTH	ND	Eastern MT*	SD	TOTAL
January	739,086	70,598	4,617	814,301
February	781,356	71,850	4,891	858,097
March	786,493	73,416	5,111	865,020
April	793,794	76,035	5,131	874,960
May	812,008	75,067	4,800	891,875
June	823,300	73,547	4,781	901,628
July	874,042	75,881	4,678	954,601
August	912,584	75,939	4,877	993,400
September	933,997	73,932	5,017	1,012,946
October	945,452	73,010	4,643	1,023,105
November	976,453	71,612	5,026	1,053,091
December	926,687	68,417	4,801	999,906

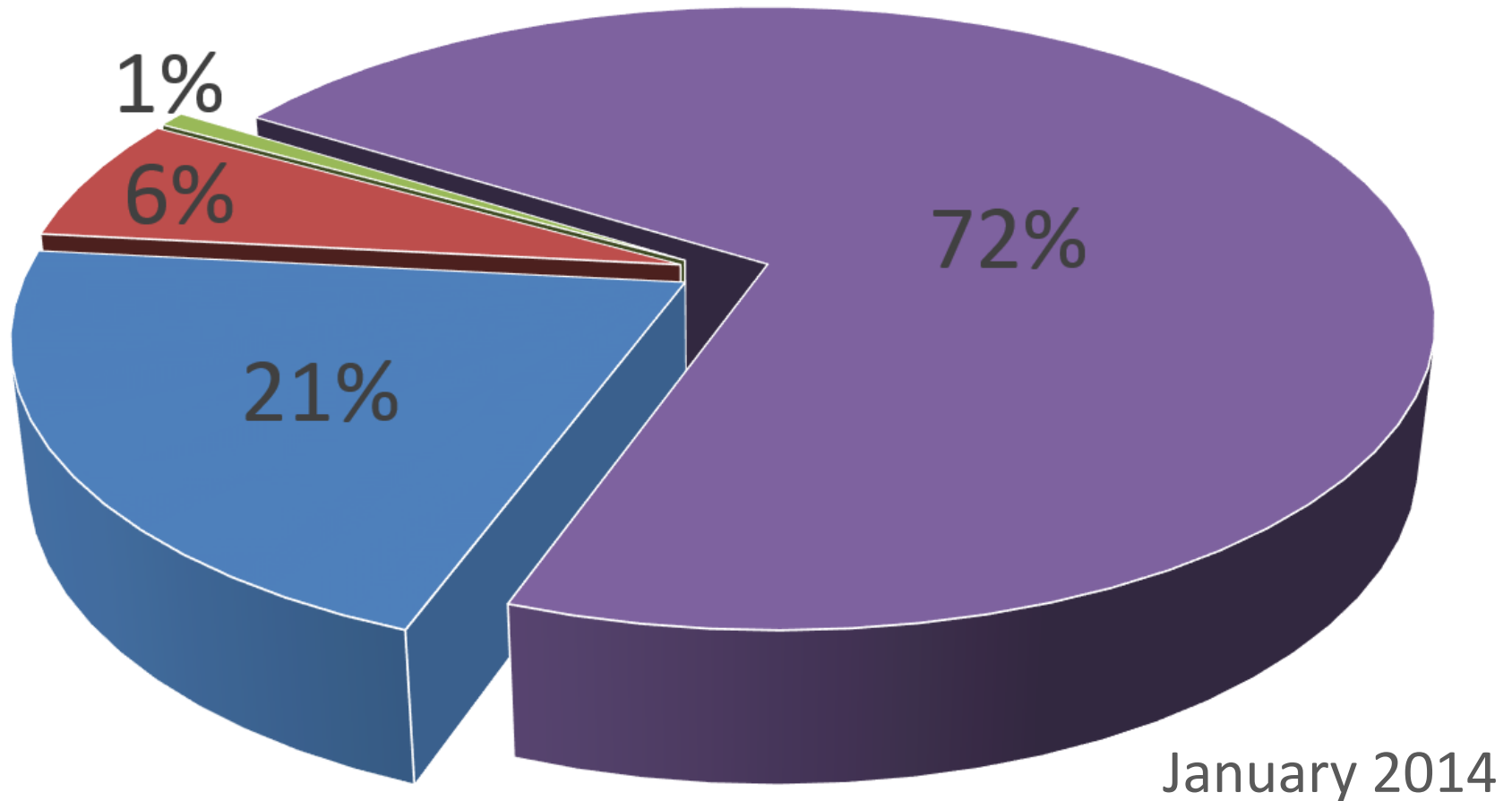


US Williston Basin Oil Production - 2014

MONTH	ND	Eastern MT*	SD	TOTAL
January	933,128			--
February				--
March				--
April				--
May				--
June				--
July				--
August				--
September				--
October				--
November				--
December				--



Estimated Williston Basin Oil Transportation



■ Estimated Pipeline Export

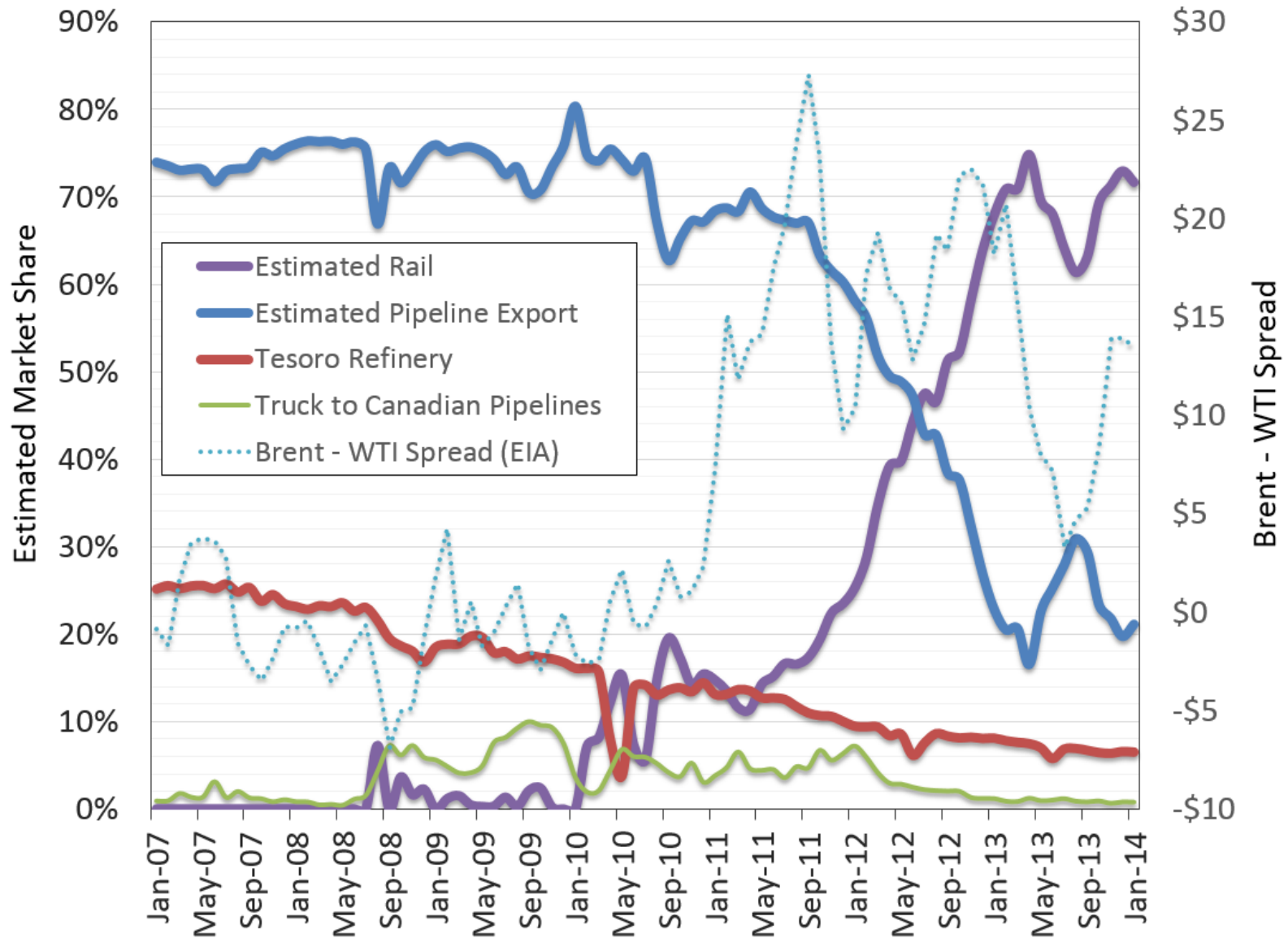
■ Tesoro Refinery

■ Truck to Canadian Pipelines

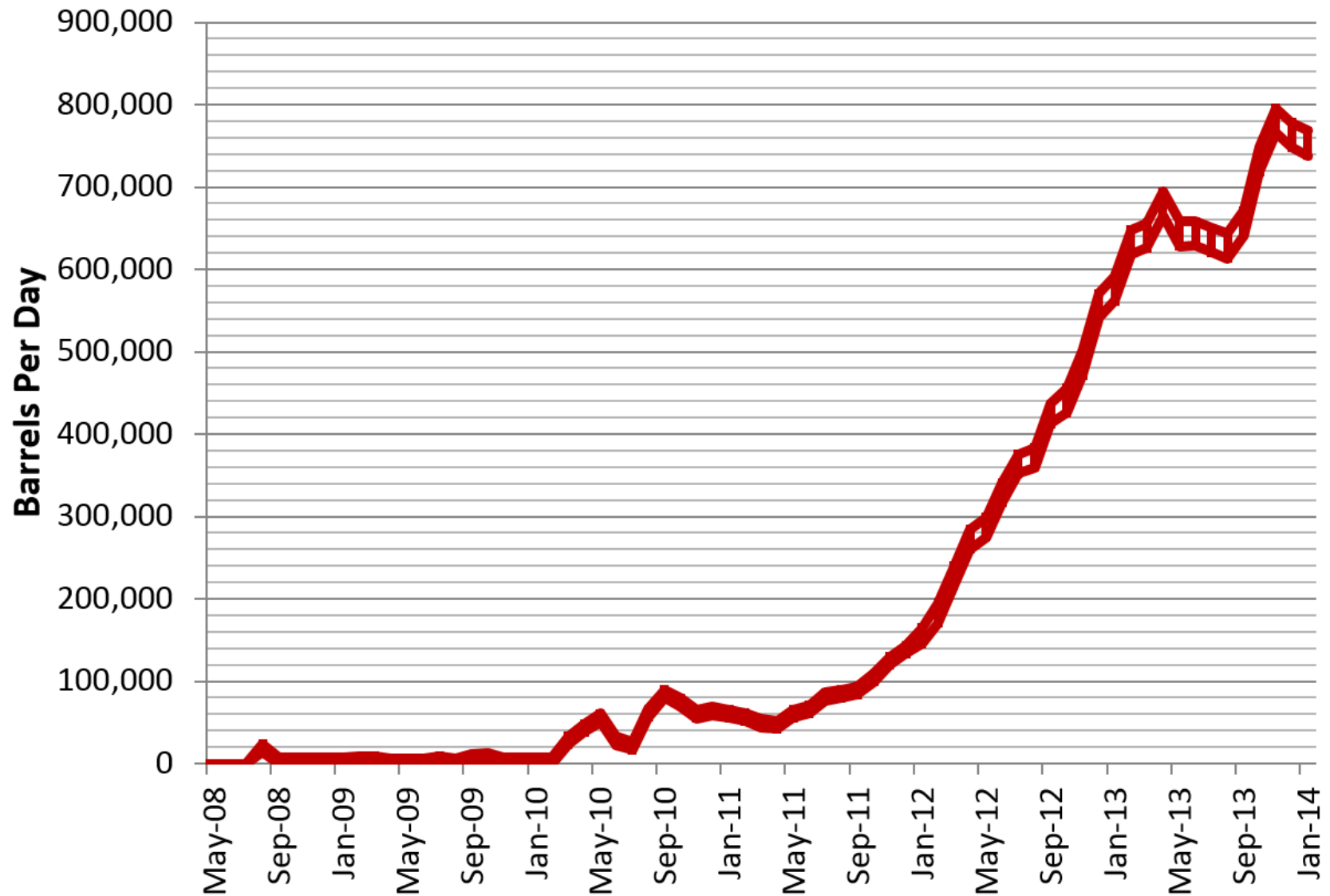
■ Estimated Rail



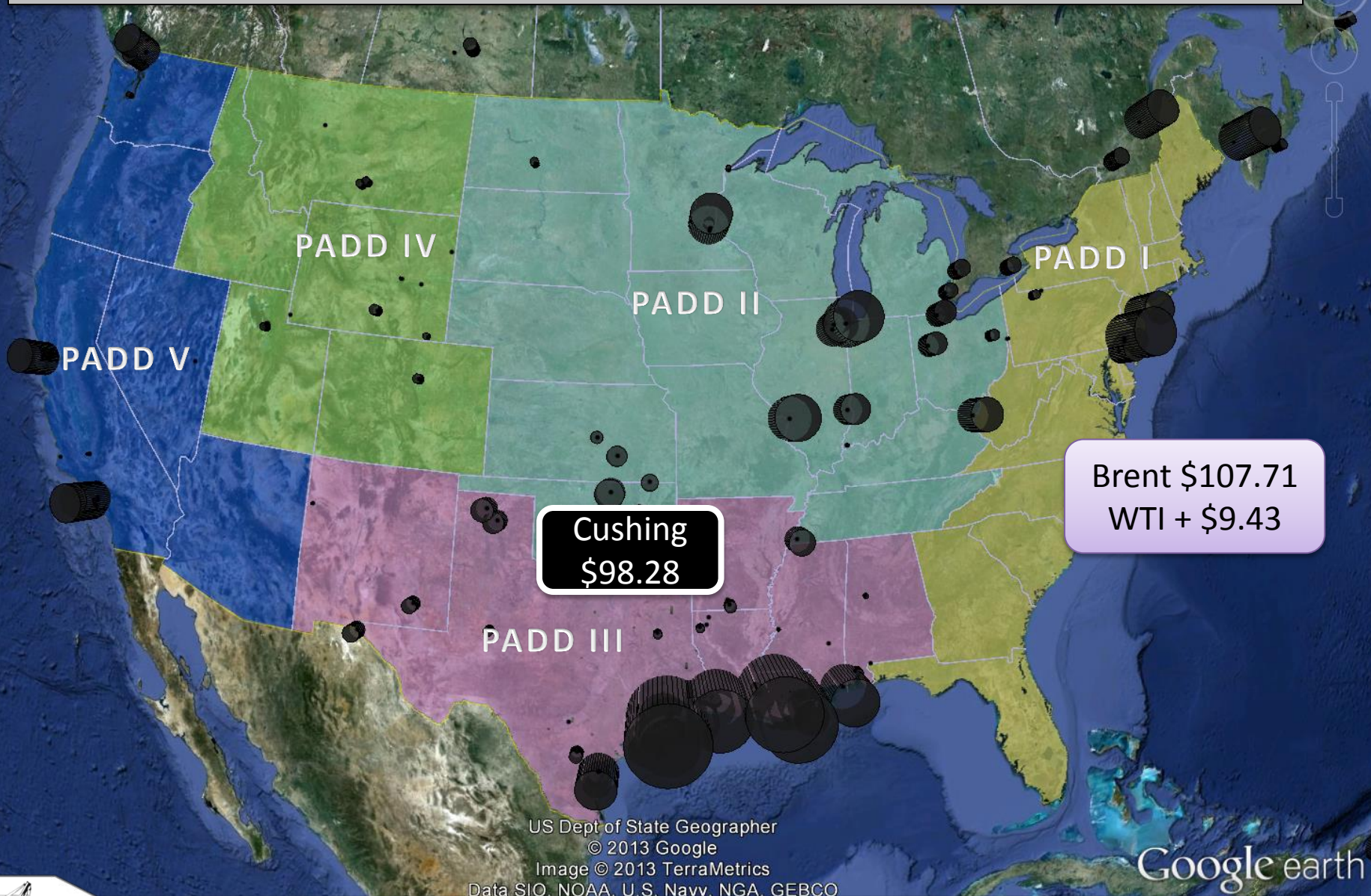
Estimated Williston Basin Oil Transportation



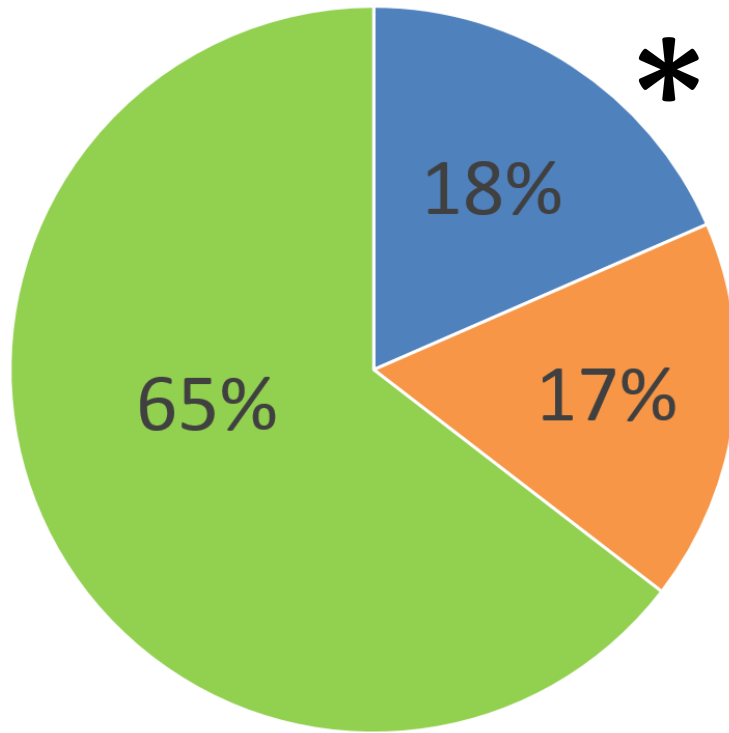
Estimated ND Rail Export Volumes



Crude Oil Prices – March 13, 2014



Solving the Flaring Challenge



Statewide

GREEN – % of gas captured and sold
Blue – % flared from zero sales wells
Orange – % flared from wells with at least one mcf sold.

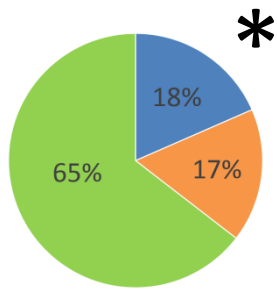
Simple Terms

Blue – Lack of pipelines
Orange – Challenges on existing infrastructure

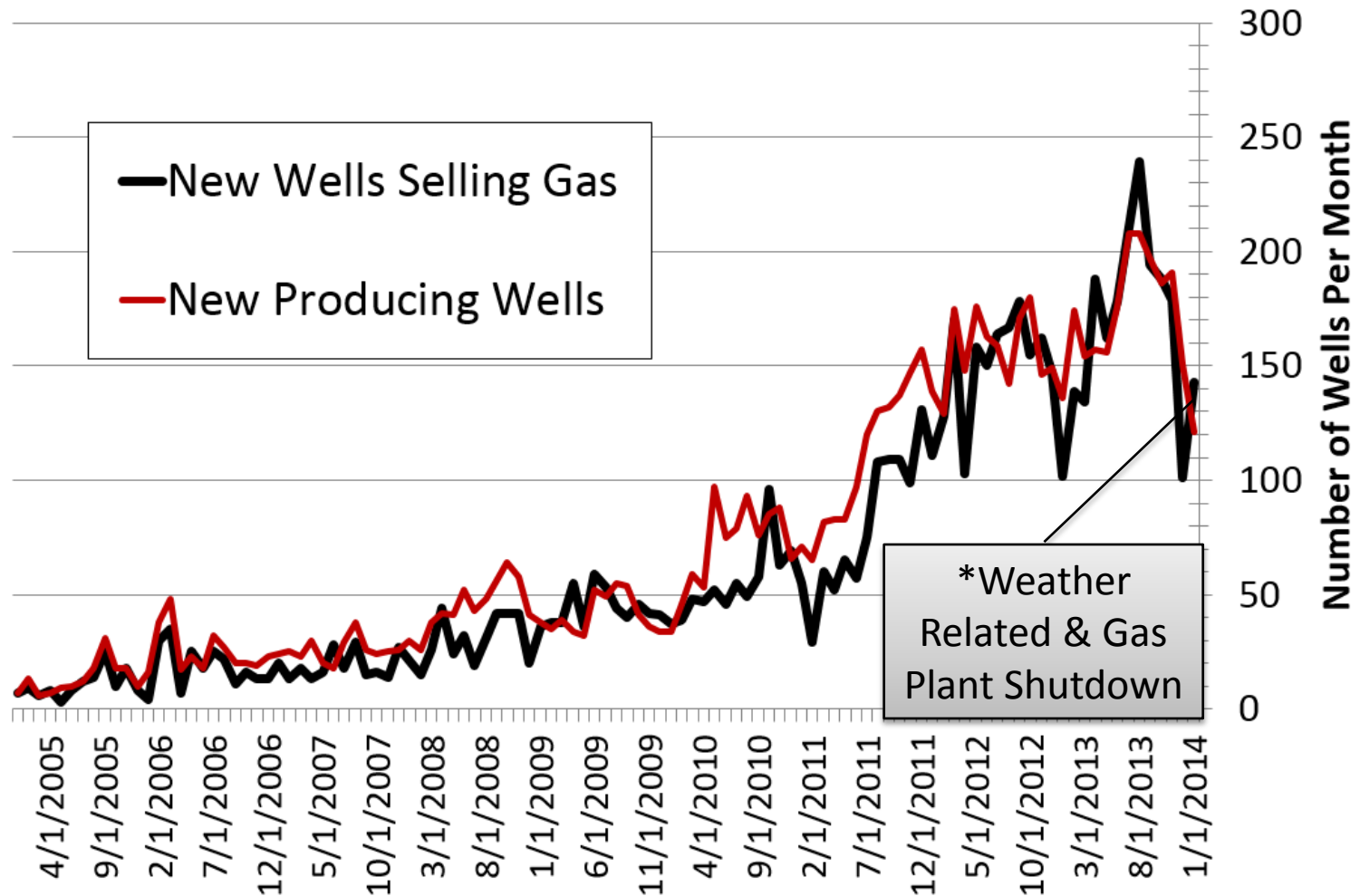
January 2014 Data – Non-Confidential Wells

**Hess Tioga Gas Plant shut-in for 140 MMCFD expansion starting in November*

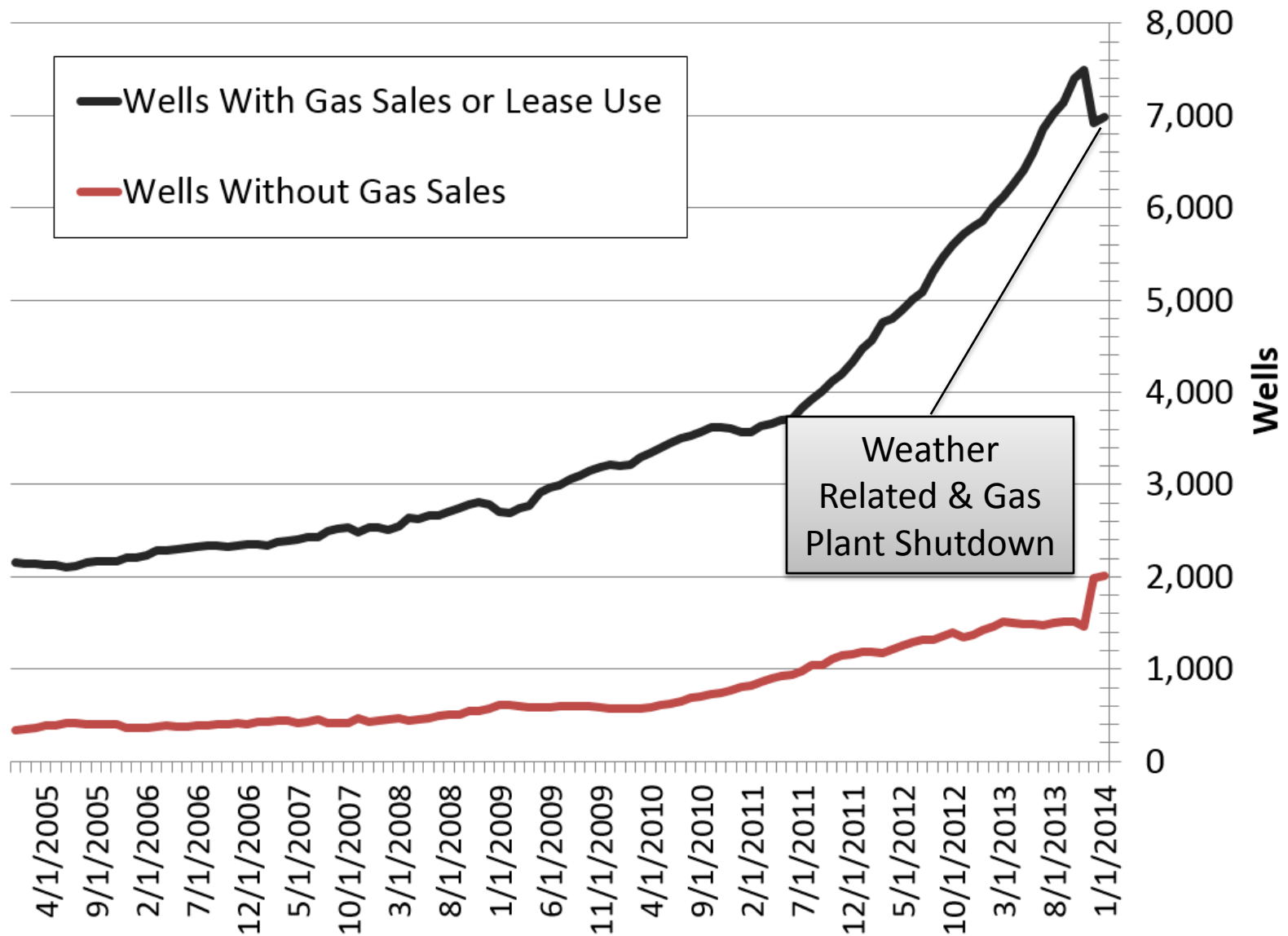




Capturing the 18% Faster Well Connections



ND Gas Gathering Statistics



Contact Information

Justin J. Kringstad, Director
North Dakota Pipeline Authority

600 E. Boulevard Ave. Dept. 405
Bismarck, ND 58505-0840

Phone: (701)220-6227

Fax: (701)328-2820

E-mail: jjkringstad@ndpipelines.com

Websites:

www.pipeline.nd.gov

www.northdakotapipelines.com



**Know what's below.
Call before you dig.**

