



MONTHLY UPDATE

AUGUST 2015 PRODUCTION & TRANSPORTATION

Published: October 13, 2015
Justin J. Kringstad, Director
North Dakota Pipeline Authority
Office: 701.220.6227
www.northdakotapipelines.com

MONTHLY UPDATE

AUGUST 2015 PRODUCTION & TRANSPORTATION

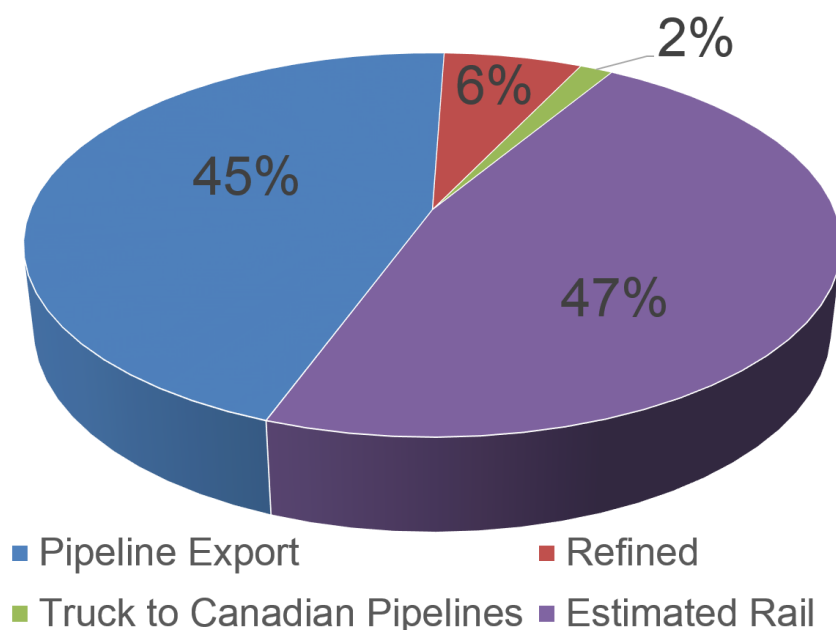
North Dakota Oil Production

Month	Monthly Total, BBL	Average, BOPD
July 2015 - Final	37,416,889	1,206,996
Aug. 2015 - Prelim.	36,779,754	1,186,444

North Dakota Natural Gas Production

Month	Monthly Total, MCF	Average, MCFD
July 2015 - Final	51,465,695	1,660,184
Aug. 2015 - Prelim.	50,965,043	1,644,034

Williston Basin Crude Oil Transportation, August 2015



CURRENT DRILLING ACTIVITY:

NORTH DAKOTA¹

68 Rigs

EASTERN MONTANA²

1 Rig

SOUTH DAKOTA²

0 Rigs

SOURCE (OCT 13, 2015):

1. ND Oil & Gas Division
2. Baker Hughes

PRICES:

Crude (WTI): \$47.08

Crude (Brent): \$49.89

NYMEX Gas: \$2.51

SOURCE: BLOOMBERG
(OCTOBER 13, 2015)

GAS STATS*

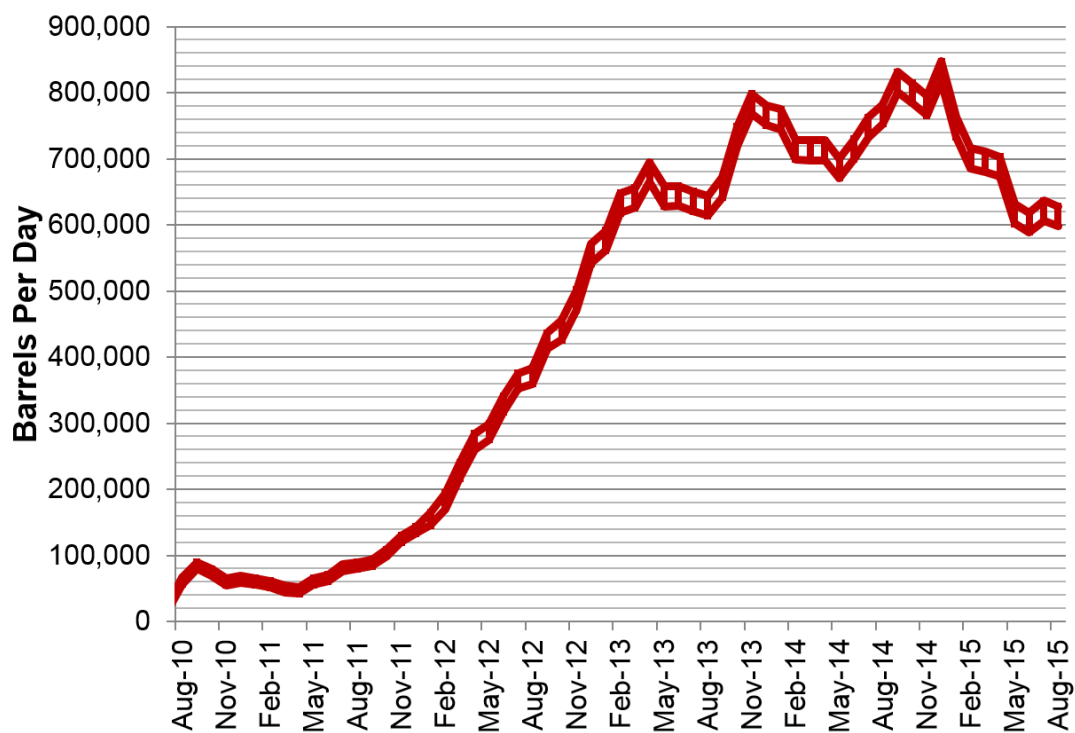
81% CAPTURED & SOLD

15% FLARED DUE TO
CHALLENGES OR
CONSTRAINTS ON EXISTING
GATHERING SYSTEMS

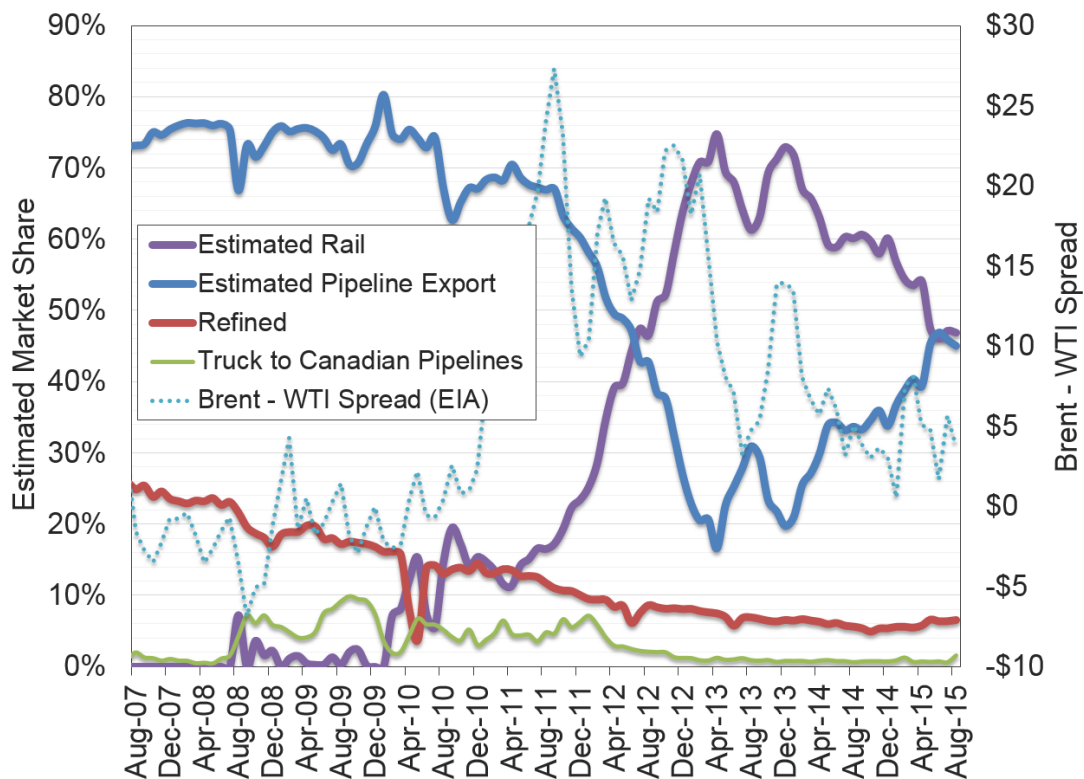
4% FLARED FROM WELL
WITH ZERO SALES

*AUG 2015 NON-CONF DATA

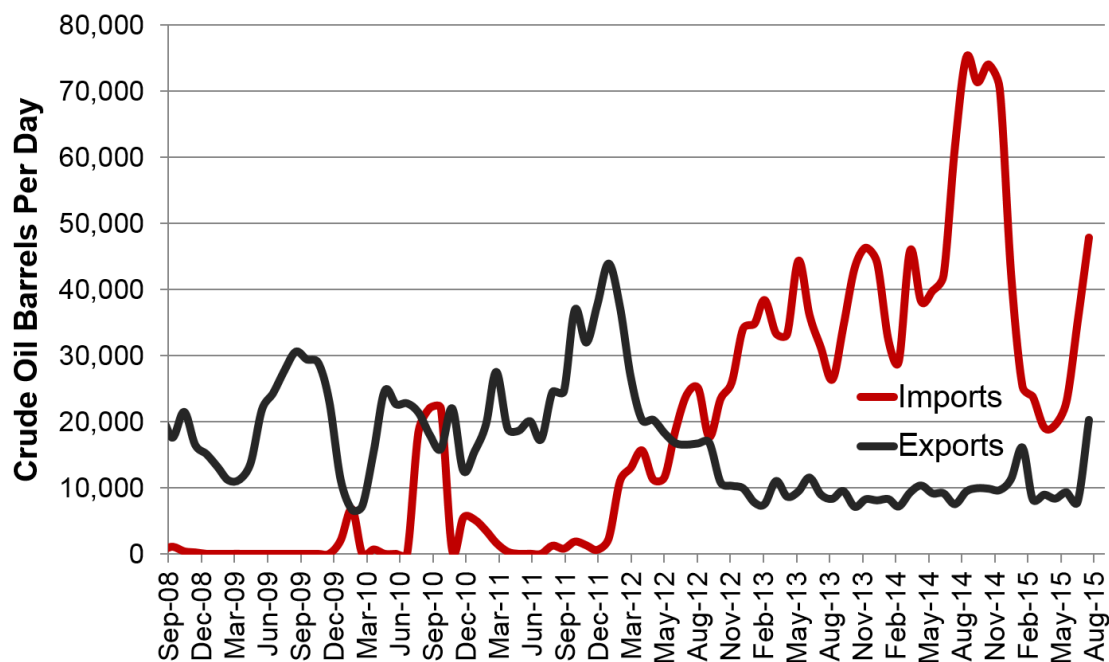
Estimated North Dakota Rail Export Volumes



Estimated Williston Basin Oil Transportation

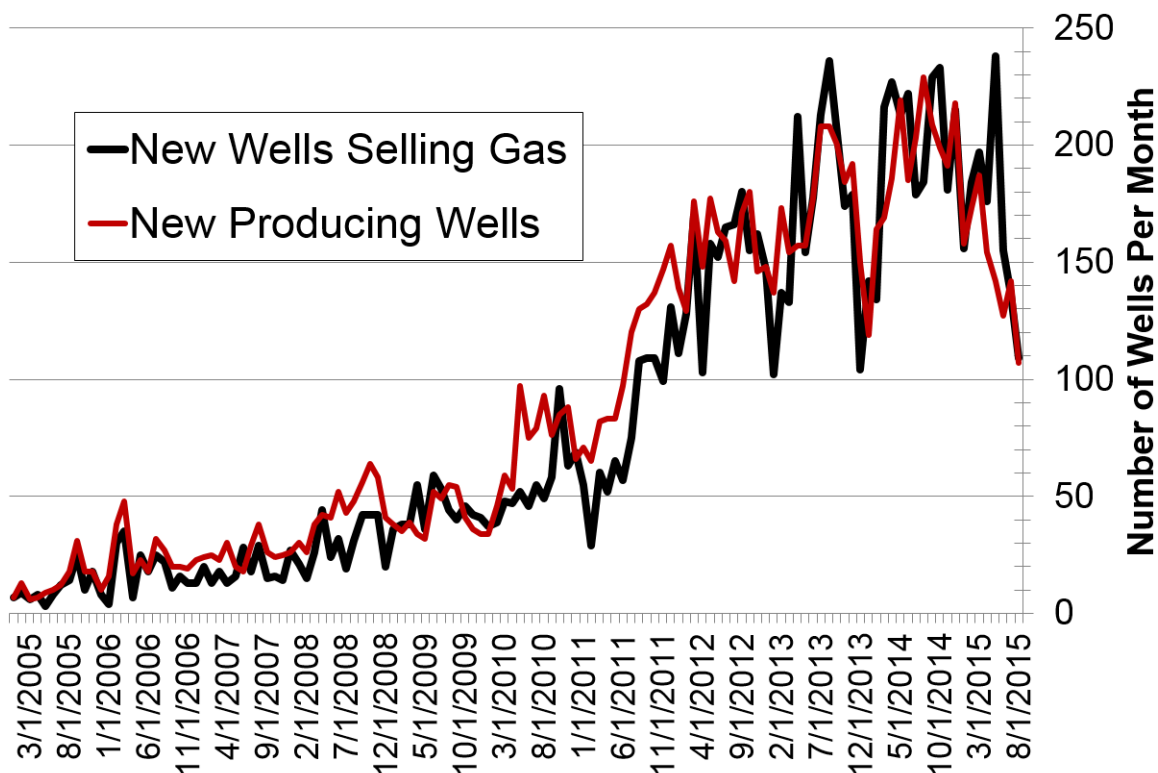


Williston Basin Truck Imports and Exports with Canada



Data for truck imports/exports chart is provided by the US International Trade Commission

New Gas Sales Wells per Month



US Williston Basin Oil Production, BOPD

2014

MONTH	ND	EASTERN MT*	SD	TOTAL
January	937,200	71,664	5,065	1,013,929
February	953,305	73,671	4,936	1,031,912
March	976,798	73,110	4,946	1,054,854
April	1,004,255	74,689	4,806	1,083,751
May	1,040,625	72,809	4,734	1,118,168
June	1,092,922	75,003	4,862	1,172,788
July	1,114,521	76,861	4,926	1,196,308
August	1,132,842	76,263	4,781	1,213,886
September	1,186,328	78,233	4,975	1,269,536
October	1,183,586	78,112	4,895	1,266,593
November	1,188,258	78,158	5,012	1,271,427
December	1,227,344	79,841	5,177	1,312,362

2015

MONTH	ND	EASTERN MT*	SD	TOTAL
January	1,191,459	77,163	5,108	1,273,730
February	1,178,330	79,634	5,051	1,263,015
March	1,191,433	78,563	4,832	1,274,827
April	1,169,962	76,020	4,860	1,250,843
May	1,202,714	74,660	4,567	1,281,941
June	1,211,330		4,403	--
July	1,206,996		4,477	--
August	1,186,444			--
September				
October				
November				
December				

** Eastern Montana production composed of the following Counties: Carter, Daniels, Dawson, Fallon, McCone, Powder River, Prairie, Richland, Roosevelt, Sheridan, Valley, Wibaux*