



MONTHLY UPDATE

MAY 2025 PRODUCTION & TRANSPORTATION

Published: July 22, 2025

Justin J. Kringstad, Director

North Dakota Pipeline Authority

Office: 701.220.6227

www.northdakotapipelines.com

MONTHLY UPDATE

MAY 2025 PRODUCTION & TRANSPORTATION

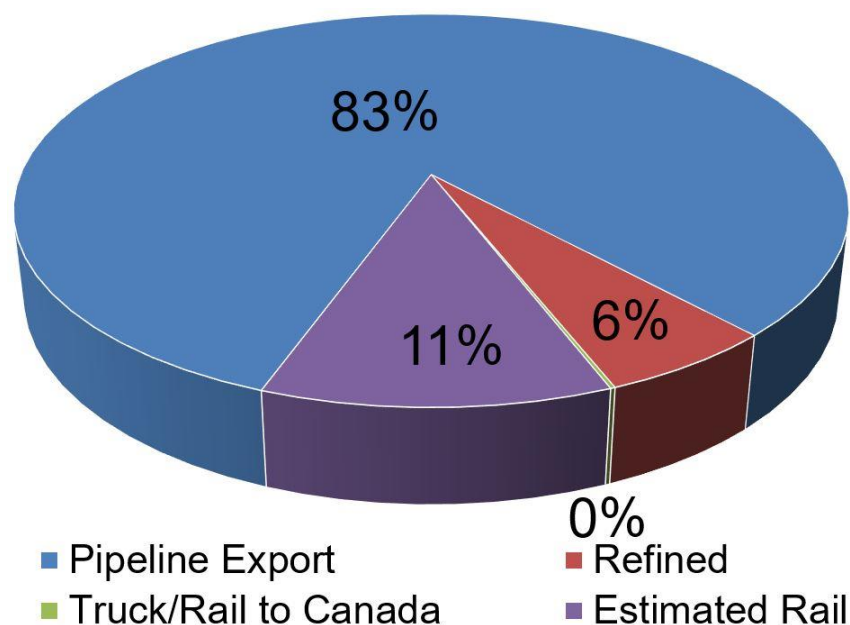
North Dakota Oil Production

Month	Monthly Total, BBL	Average, BOPD
Apr. 2025 - Final	35,199,579	1,173,319
May 2025 - Prelim.	34,496,480	1,112,790

North Dakota Natural Gas Production

Month	Monthly Total, MCF	Average, MCFD
Apr. 2025 - Final	104,102,119	3,470,071
May 2025 - Prelim.	104,010,409	3,355,174

Estimated Williston Basin Oil Transportation, May 2025



CURRENT DRILLING ACTIVITY:

NORTH DAKOTA¹

32 Rigs

EASTERN MONTANA²

2 Rigs

SOUTH DAKOTA²

0 Rigs

SOURCE (JULY 22, 2025):

1. ND Oil & Gas Division
2. Baker Hughes

PRICES:

Crude (WTI): \$66.36

Crude (Brent): \$68.42

NYMEX Gas: \$3.25

SOURCE: BLOOMBERG
(JULY 22, 2025 12PM EST)

GAS STATS*

96% CAPTURED & SOLD

3% FLARED DUE TO
CHALLENGES OR
CONSTRAINTS ON EXISTING
GATHERING SYSTEMS

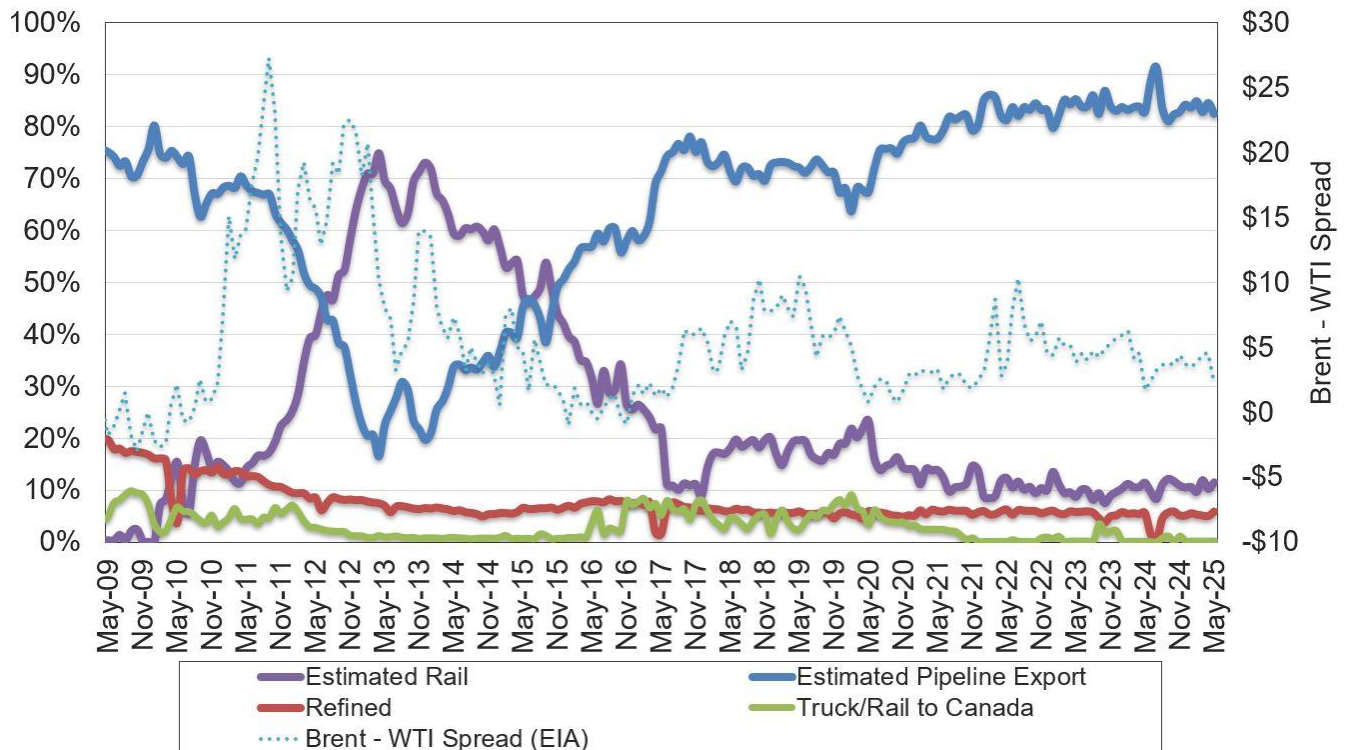
1% FLARED FROM WELL
WITH ZERO SALES

*MAY 2025 NON-CONF DATA

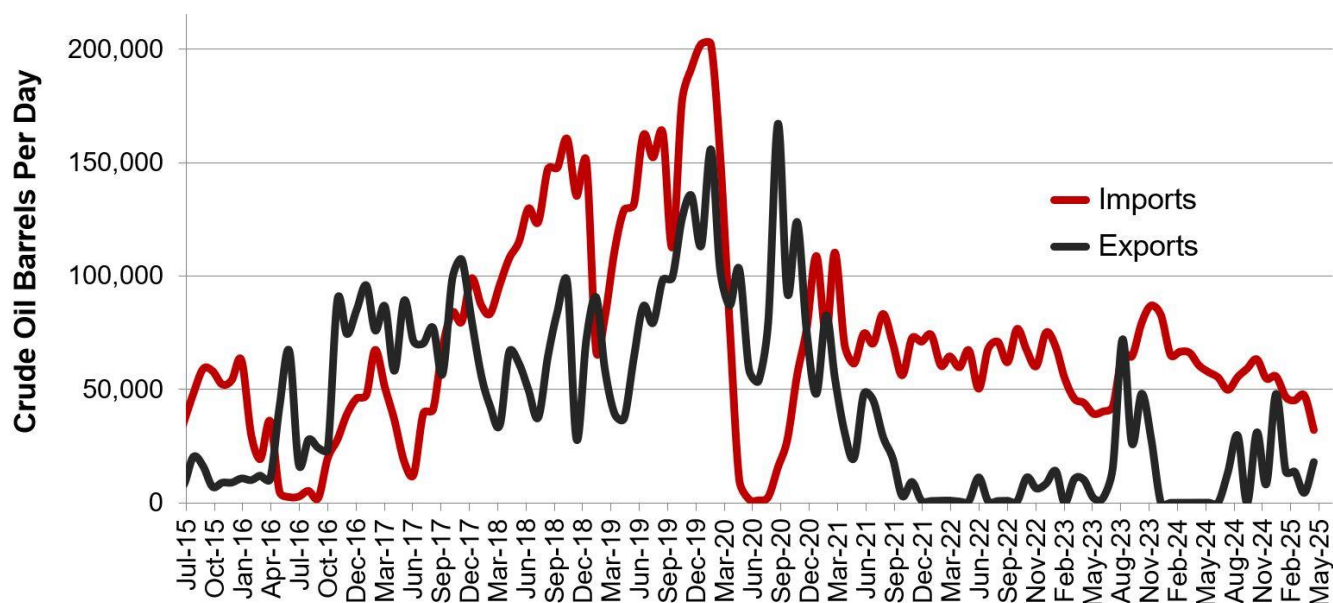
Estimated North Dakota Rail Export Volumes



Estimated Williston Basin Oil Transportation

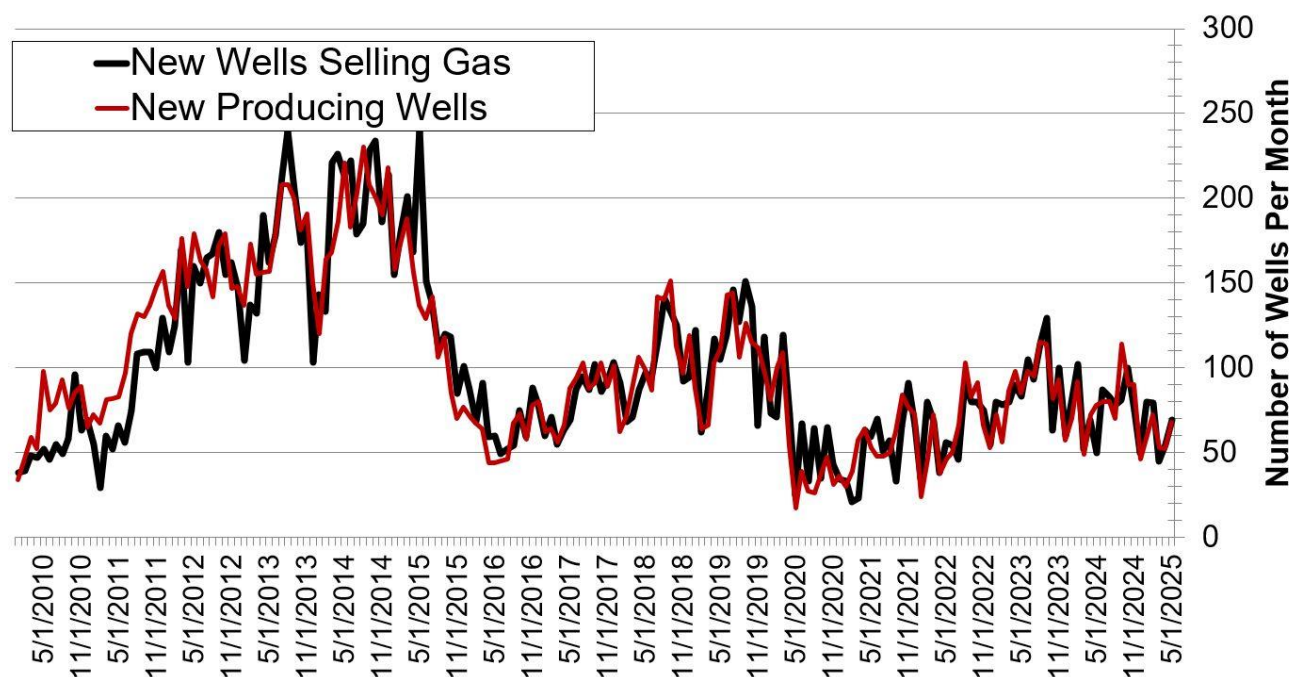


Williston Basin Truck/Rail Imports and Exports with Canada



Data for imports/exports chart is provided by the US International Trade Commission and represents traffic across US/Canada border in the Williston Basin area.

New Gas Sales Wells per Month



US Williston Basin Oil Production, BOPD

2024

MONTH	ND	EASTERN MT*	SD	TOTAL
January	1,105,208	59,306	2,312	1,166,825
February	1,256,126	66,332	2,412	1,324,870
March	1,231,474	70,690	2,590	1,304,754
April	1,243,018	72,392	2,430	1,317,840
May	1,198,803	72,636	2,349	1,273,788
June	1,186,409	71,586	2,370	1,260,365
July	1,169,457	69,499	2,329	1,241,285
August	1,176,696	75,938	2,349	1,254,983
September	1,203,157	75,370	2,326	1,280,853
October	1,180,995	78,511	2,487	1,261,993
November	1,225,297	83,190	2,265	1,310,752
December	1,191,291	76,607	2,246	1,270,144

2025

MONTH	ND	EASTERN MT*	SD	TOTAL
January	1,175,117	74,740	2,281	1,252,138
February	1,165,405	71,448	2,282	1,239,134
March	1,193,397	75,729	2,272	1,271,398
April	1,173,319	73,901	2,294	1,249,514
May	1,112,790	75,178		
June				
July				
August				
September				
October				
November				
December				

** Eastern Montana production composed of the following Counties: Carter, Daniels, Dawson, Fallon, McCone, Powder River, Prairie, Richland, Roosevelt, Sheridan, Valley, Wibaux*